



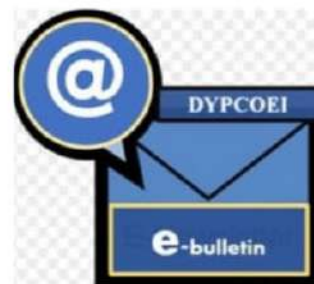
**Dr. D. Y. PATIL**  
EDUCATIONAL FEDERATION  
Varale Campus

# e - bulletin

Volume - 2

Edition - 7

**July - 2022**



## **Dr. D. Y. Patil College of Engineering and Innovation**

### **Address:**

SR. No. 27/A/1/2c, Near Eco City,  
Talegaon, Varale, Pune - 410507,  
Maharashtra, India  
[www.dypcoei.edu.in](http://www.dypcoei.edu.in)

### **Contacts:**

020 48522562, 8799925769, 7972165097,  
8669704710

### **Editorial Committee:**

**Dr. Suresh Mali**  
Principal,

**Dr. Alpana Adsul,**  
Head, Department of Computer Engg.

**Prof. Dipannita Mondal,**  
Head, Department of FE

**Prof. Rushikesh Londhe,**  
Asst. Professor, Department of FE

**Chaitanya Umesh Rasane,**  
FE Div - C .

Content.....

Page-1

**Blood Donation Camp**

Page- 2

**Poster presentation**

Page-3&4

**Tree Plantation Activity**

Page-5

ध्येय...

Page-6

**Infrared Spectroscopy: Applications**

Page-7

**Shaping The Future with Human and Artificial Intelligence**

Page-8

**#Save Buxwaha Forest**

Page-9

**How the Sun and the Moon Were Made**

Page-10

**हिरोजी इंदुलकर (देशमुख)**

Page-11

**Mind Mapping Session by principal of DYP COEI Dr. Suresh Mali**

Page- 12

**Quote of the month**

# BLOOD DONATION CAMP

It is understood that "blood donation is life donation, blood donation is the best donation". Blood bank stocks at various hospitals in the city are declining to some extent today. On this occasion, in order to inculcate the importance of blood donation in the youth and to motivate them for blood donation, Chakreshwar Medical Foundation Chakan Blood Bank Center jointly organized a function at varale on Tuesday (july 5).

Blood donation camp was organized at D.Y. Patil Federation varale Campus. At this time, each blood donor was given a certificate and a tree sapling.

It was planted at D.Y. Patil College of Engineering and Innovation Campus in the name of a blood donor and promised to take care of the plant for the next few years. More than hundred students planted trees in the campus

This camp was organized under the guidance of Dr. Sushant Patil President of Dr.D.Y.Patil Educational Federation. Secretary Adv. Anuja Patil Madam, Executive Director Vidyanand Mankar Sir, Principal Dr. Suresh Mali Sir as well as Head of Department of First Year Engineering Prof.Dipannita Mondal, Dr. Kavita U. Shinde, Prof. Supriya B. Raut, Prof. Sherin Kurian, Prof.Rushikesh Londhe, Dinesh Patkar etc. were present.

Deaths are often due to untimely blood transfusions. Therefore, the challenge of donating more and more blood to the youth was raised by the President of Chakan Blood Bank Center, Dr. Jeevan Sagre did. On this occasion, the first year students also raised awareness about the importance of blood donation through posters.



Ceremony of Blood Donation Camp held at Seminar Hall in presence of Adv. Anuja Patil Principal Dr.Suresh Mali, Director, Dr. Priyanka Singh,HOD FE, Prof .D.D.Mondal



Do good for others by giving from what you have. Surely, it will come back to you with greater value - donate blood

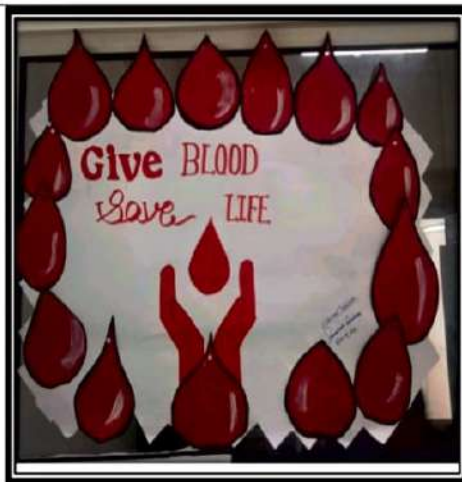
# Poster Presentation



Jyotiraditya Panchal Div: B Roll no: 1255



Devika Naik Div: B Roll no: 1246



Shivani Tarwade Div: C Roll no: 1350



Aditya Chaubey Div: A Roll no: 1124



Sejal Jadhav Div: B Roll no: 1206



Parth Mane (1231) and Shubham Kharade (1218) Div: B

# Tree Plantation

Tree plantation at Dr.D.Y.Patil Educational Federation Varale Maval.

Dr.D.Y.Patil Educational Federation planted trees on the occasion of Blood Donation Camp at Varale. On this occasion, each donor who donated blood was gifted a plants. Students, were informed to plant trees on the premises of the college and take an oath to take care of it.

Rose, Mogra, Lilyful, Mango, Guava, Chiku, and other ornamental tree species were planted.

The occasion was graced by the presence of Dr. Sushant Patil President of Dr.D.Y.Patil Educational Federation, Secretary Anuja Patil Madam, Executive Director Vidyanand Mankar, Principal Dr. Suresh Mali, First Year Department Head Prof. Dipannita D. Mondal, Prof. Rushikesh Londhe, Dinesh Patkar, and other professors guided the students.



Dr.D.Y.Patil Educational Federation planted trees on the occasion of Blood Donation Camp at Varale. In Presence of Executive Director Vidyanand Mankar, Principal Dr. Suresh Mali,HOD,AI&DS Dr. Latika Desai, HOD FE Prof. Dipannita D. Mondal, Prof. Rushikesh Londhe and First Year Students.



Tree Plantation Activity Banner Presentation By FE in Presence of, Principal Dr. Suresh Mali, HOD,AI&DS Dr. Latika Desai, HOD FE Prof. Dipannita D. Mondal, Prof. Vipul Mahindrakar and First Year Students.  
DR.DY, PATIL COLLEGE



Tree Plantation by First Year Student in the College Campus

# ध्येय.....

"धावत जावं ध्येयाकडे आणि उगाच मिठीत घ्यावं !!  
पायात रुतलेल्या काढ्याला, सहज विसरून जावं !!

आठवणीत ठेवावं ते कष्ट, त्याला पुन्हा पुन्हा गिरवावं !!  
कितीही घेतली भरारी तरी, मन जमिनीवर रहावं !!

वाचू नये गाथा यशाच्या , पुढच्या ध्येयाकडे पहावं !!  
नवे मार्ग ,नवी दिशा , पुन्हा जिद्दीने चालावं !!

कधी विरुद्ध , कधी प्रवाहात, स्वतःला आव्हान द्यावं !!  
कधी दिवसा , कधी रात्री, फक्त ध्येय समोर दिसावं !!

प्रा.ऋषिकेश लोंढे



# Infrared Spectroscopy: Applications

Prof. Supriya Baban Raut

## Introduction

Infrared spectroscopy (IRS) is one of the most important analytic techniques available to food scientists and industry nowadays. IRS provides qualitative and quantitative information in a fast, cost-effective and nondestructive way, does not require the use of polluting chemicals, and can be carried out even by minimally trained personnel. This makes IRS a potent tool for the quality control/assurance in a variety of different (industrial) settings and suitable for applications under steady process conditions, that is, on-line. IRS has also widened the horizons for the detection of adulteration and the authentication of food products. The first IRS instrumentations became available in the late 1940s. The earliest applications of IRS were reported in the 1950s, but it was not until the 1960s that IRS was used for the analysis of food samples. The most significant advancement in IRS has resulted, however, from the introduction of Fourier transform (FT) instruments that has made IRS even more rapid, reproducible, and sensitive.

## Infrared spectroscopy

Infrared spectroscopy (IR) provides a sensitive probe for specific functional groups in polymers. Especially when dealing with hydrocarbon polymers such as polystyrenes and polydienes, functional groups such as hydroxy, amine, and carbonyl can be easily detected by IR. IR is also useful in the analysis of reactions in which the functional group on a polymer is transformed. This method allows for quick determination of the extent of reaction. The potential exists for establishing quantitative Beer's law correlations of the absorption intensities versus the concentration of functional groups, but more often this technique is used to simply note the presence of infrared absorptions characteristic of a given functional group





## **SHAPING THE FUTURE WITH HUMAN AND ARTIFICIAL INTELLIGENCE**

Artificial intelligence (AI), cognitive systems and machine learning play a transformative role in bringing about the economy and society of the future. For international business and industrial value chains, this means a fundamental structural change, as these technical systems are capable of learning and are increasingly able to apply what they have learned to new situations. They can plan processes, make forecasts and even interact with people. The International Data Corporation predicts that worldwide expenditure on cognitive solutions will reach 40 billion U.S. dollars by 2020.

However, the use of new technologies not only offers exciting new opportunities: it also constantly presents us with challenges. If Germany is to attain technological leadership in the field of AI, it needs not just technological solutions, but also social dialogue. Fears and myths must be countered with scientific facts. Machines will extend our sphere of influence, but they will not take over and become our leaders.

At many of its institutes, the Fraunhofer-Gesellschaft is developing key AI technologies and applications in such areas as robotics, image and language processing, and process optimization. This includes machine learning techniques for industry, the use of cognitive systems in cyber security and the requisite research into artificial neural networks. Our research makes major contributions to the theory and the ethical design of AI while also being closely aligned with the practical needs of our customers.

A handwritten signature in blue ink, reading "R. Neugebauer". The signature is stylized with a large, flowing "R" and a long horizontal stroke at the end.

Prof. Dr.-Ing. Reimund Neugebauer  
President of the Fraunhofer-Gesellschaft

# #Save Buxwaha

## Forest

Harshal Rasane  
FE Div-C

A campaign to save Madhya Pradesh's Buxwaha forest has been gaining momentum, as the diamond mining project taken up by Aditya Birla group's Essel Mining & Industries Limited (EMIL) risks felling of over 2 lakh trees as well as increasing air and water pollution.

Moreover, the execution will change the whole biodiversity of the nearby land.

The proposed project concerns an area of 384 hectare in Buxwaha Protected Forest and located near Village Sagana. The project is about 80 Kms from Chhatarpur, the district headquarters and 260 Km from Bhopal the state capital. The estimated resources in the block is around 53,70 million tonnes of kimberlite ore containing about 34 million carats of tough diamonds.

According to reports, EMIL plans to develop a fully mechanized opencast mine and processing plant for diamond. The project is estimated with an investment of INR 2500 Cr. EMIL is currently in the process of obtaining various regulatory clearances such as approval of Mine Plan, Environment & Forest clearances required for the execution of mining lease. The company targets the execution of the Mining Lease by end of the year 2022 and thereafter initiates the mining activities.

The block consists of 7000 villagers and over 17 tribes which are forest dwellers and directly depends on the forest products such as mahua, tendu leaves, chironji and Amla for livelihood. The project when executed will clear the land by cutting over 2 lakh trees and will require an estimated 5.9 million cubic meters per day of water that will be fulfilled by making a dam diverting a seasonal nallah (canal) which can store upto 17 million cubic meter.

According to Indian Bureau of Mines (IBM), the top three diamond reserves states of India are Andhra Pradesh, Chhattargarh and Madhya Pradesh among which Madhya Pradesh alone accounts to have 90.18 percent. The mine is estimated to have the potential of the biggest reservoir of diamonds in Asia. Earlier the project was given to the world largest diamond miner's of Australia, Rio Tinto but they exited the project later gifting the project to the state government, the official never provided with a specific reason but was mainly due to light of bad press.

People concerned over the project have created a nationwide protest and online awareness campaign.

**#savebuxwahaforest** Marking the world environment day on June 5 a group started an initiative of the symbolic Chipko movement and called out people from different communities to join the campaign spreading awareness. Earlier a public interest litigation (PIL) has been submitted to the Supreme Court in order to put a stay on the diamond mining project by EMIL.



# How the Sun and the Moon Were Made

Chaitanya Rasane  
FE Div - C.

Do you ever wonder where the moon and the sun came from? The Inuit people of Alaska have a theory.

They tell a story about a beautiful girl. She was very nice. In contrast, her brother was a mean little boy. One day he proposed something. "We should go to a party," he said. The girl accepted. First, it was necessary for her to prepare. She arranged her hair and put on nice clothes. This required a lot of time. But the girl worked hard, and soon she had success. She looked perfect.

They attended the party together. The girl was having fun. Later, she walked

into the bathroom. Suddenly, the lights were turned off! Someone grabbed her hair and tore her clothes. She ran out of the bathroom. She wanted to know who did this to her. Then she had an idea. She fixed her hair again. This time it was even more beautiful. She even balanced beautiful jewels in it. She wanted to encourage the

person to grab it again. She put black dirt in her hair. The purpose of this was to catch the person.

She went to the bathroom again, and it was the same pattern. The lights went off, and someone grabbed her hair. When he released it, his hand was black. The girl returned to the party. She knew there was only a single person with a black hand. When she saw that person, he was very familiar. It was her brother!

He ran into the woods. The girl ran after him. They both carried fire so they could see in the dark. The smoke went into the air. As they ran, they grew. They became huge. Then they went into space. When the girl's fire went out, she hung in the sky. She became the moon, and her brother became the sun. They chase each other forever.



# हिरोजी इंदुलकर

सिद्धू जाधव  
(कार्यशाळा प्रशिक्षक)



"सेवेचे ठायी तत्पर"

स्वराज्याचे वास्तुविशारद आपल्या कौशल्याने अभेध, ताकदवान आणि रौद्र अशी स्वराज्याची राजधानी घडविणारे हिरोजी इंदलकर.

सुरतेच्या स्वारीवर निघण्याआधी महाराजांनी हिरोजींच्या हाती मोहरा दिल्या आणि राजे स्वारीवर निघून गेले. सन १६५६ ला हिरोजींनी किल्ले रायगडाच्या बांधणीचा श्रीगणेशा केला. जवळ-जवळ १४ वर्षे रायगडाचे बांधकाम चालले. इतकी वर्षे का लागली रायगडाच्या बांधकामाला? असा प्रश्न सर्वानाच पडतो. त्याचे कारण म्हणजे पंधराशेच्या आसपास गडाच्या पाय-या, तीनशे इमारती, राजभवन, राजसभा, राज्यांचे महाल, व्यापारी बाजारपेठा, अष्टप्रधान मंडळाची सदर, टांकसाळ, धान्याची कोठारे, तलाव, स्तंभ, गजशाळा इत्यादी असं तनमनधन लावन हिरोजी इंदलकरांनी रायगडाचे बांधकाम केले. हिरोजींनी या वास्तूच्या बांधकामावेळी कांची कमतरता भासल्यावर आपली वडिलोपार्जित जमीन जुमला, घर सर्वकाही विकून हा भव्य दिव्य असा या रागाडा असा रायगड उभा केला,

॥ जगदंब ॥

# Mind Mapping

-Dr. Suresh Mali  
(Principal of DYPCOEI)

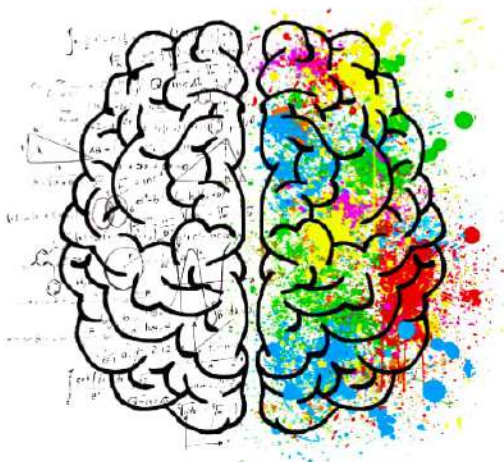
Learning is defined as the acquisition of knowledge or skills through experience, study, or by being taught. Every student has a different way of learning. Unique approaches to learning are based on strengths, weaknesses, and preferences. Professors try to accommodate the different learning styles of their students through lectures or one-on-one.

## • Mind Mapping And Other Learning Techniques

The course and the required textbook teach us several learning techniques such as skim reading, meta guiding, schematic processing, and mind mapping. Speed reading allows us to read at a fast pace. Speed reading can be thought to be skim reading - where you take your finger and put on the text a...that mind mapping isn't useful. As a student, I found mind mapping to be very helpful in understanding the assigned readings and made readings simpler instead of the text being complex and hard to comprehend.

## How to Mind Map in Seven Steps?

- Start in the center of a blank page. Turn the page sideways.
- Use an Image or Picture for your central idea. An Image is worth a thousand words. ...
- Use colors throughout. ...
- Connect Main Branches to the central image. ...
- Make your lines curved. ...
- Use One Key Word per line. ...
- Use Images throughout.



Honourable Principal Dr. Suresh Mali sir Interacting with students at Mind Mapping Session

---

## Quote of the Month

---

***"The greatest religion is to  
be true to your own nature.  
Have faith in yourselves.."***

***-Swami Vivekanand***



★★★